

# LIM RambaQUICK™ StrepB

Instructions For Use  
For Research Use Only (RUO).  
Not for use in diagnostic procedures.

ENGLISH

Instructions For Use

## REFERENCES

Pack Size	Ordering References	Base (B)	Supplement (S)
5000 mL 1000 broths of 5 mL =	LB082	LB082(B) Weight: 150 g	LB082(S) Weight: 0.5 g
<b>LIM RambaQUICK™ StrepB Method</b>			
CHROMagar™ StrepB	SB282	5000 mL = 250 Tests of 20 mL	
LIM RambaQUICK™ StrepB	LB082	5000 mL = 1000 broths of 5 mL	

## MEDIUM PURPOSE

Selective Enrichment Broth for Group B Streptococcus (GBS) Screening.

The CDC recommends pregnant women to be tested at 35 to 37 weeks of pregnancy for *Group B Streptococcal* (GBS) carriage by selective enrichment broth of vaginal/anorectal swab samples, followed by subculture. However, the selective broth formulas are not dedicated to the inhibition of *Enterococci*, usually part of the anorectal flora and able to hide the growth of GBS, source of false negative results.

LIM RambaQUICK™ StrepB is a selective enrichment broth designed to largely reduce the growth of *Enterococci*, while allowing growth of GBS, and, therefore to raise the sensitivity of the prepartum screening method.

To follow these recommendations, CHROMagar™ have created the LIM RambaQUICK™ StrepB Method composed by the selective broth LIM RambaQUICK™ StrepB and a chromogenic culture media, CHROMagar™ StrepB.

## COMPOSITION

The product is composed of a powder base and a supplement.

Product	=	Base (B)	+	Supplement (S)
Total g/L		30.0 g/L		0.1 g/L
Composition g/L		Peptone 23.0 Dextrose 2.0 Salts 4.9 Selective mix 0.1		Selective mix 0.1
Aspect		Powder Form		Powder Form
STORAGE		15-30 °C		2-8 °C
FINAL MEDIA pH		7.8 +/- 0.2		

Need some  
Technical Documents?

Available  
for download on  
[www.CHROMagar.com](http://www.CHROMagar.com)

- Certificate of Analysis (CoA) --> One per Lot
- Material Safety Data Sheet (MSDS)

## PREPARATION (Calculation for 1 L)

### Step 1

Preparation  
of the Base

- Disperse slowly 30.0 g of powder base in 1 L of purified water.
- Swirl or stir gently to homogenize.
- Autoclave at 121 °C during 15 min.
- Cool down to room temperature keeping on stirring.

### Step 2

Preparation  
of the Supplement

- Prepare a stock solution of the LIM RambaQUICK™ StrepB Supplement:  
Add 100 mg to 4 mL of purified water.
- Swirl well until complete dissolution.
- Filter sterilize and aseptically add 4 mL into the prepared broth.
- Stir to homogenize.

Final  
Media

### HELPING CALCULATION

1 L	100 mg into 4 mL of sterile water
5 L	500 mg into 20 mL of sterile water
25 L	2.5 g into 100 mL of sterile water

### Step 3

Pouring

- Disperse 5 mL into sterile tubes.

## Storage

- Store in the dark before use.
- Prepared broth tubes can be kept for one day at room temperature.
- Prepared broth tubes can be kept for 12 months under refrigeration (2/8 °C) if properly prepared and protected from light and dehydration.

# LIM RambaQUICK™ StrepB

Instructions For Use  
For Research Use Only (RUO).  
Not for use in diagnostic procedures.

ENGLISH

Instructions For Use

## INOCULATION

### Preparation:

- Remove the tube from 2/8 °C and allow to warm at room temperature before inoculation.

### Selective Enrichment:

- Add the swab sample into a 5 mL tube of LIM RambaQUICK™ StrepB broth and incubate from 6 h to 18 h (optimum time of 6 h) at 35-37 °C.

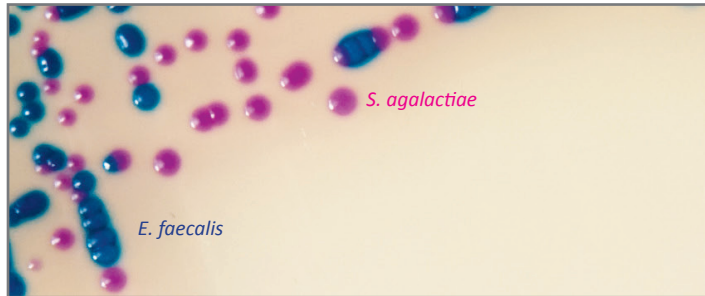


### Isolation:

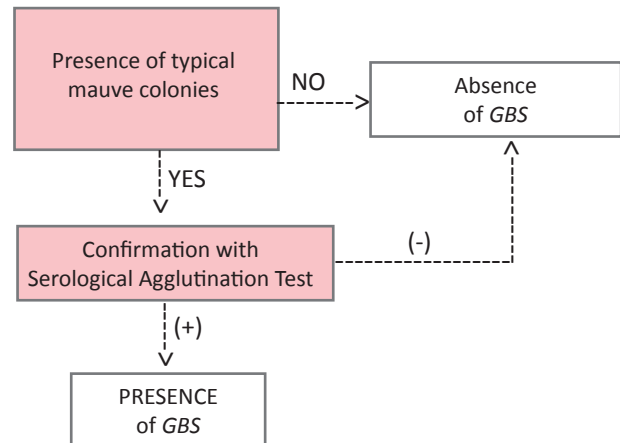
- From the broth, streak 10 µL on CHROMagar™ StrepB\* culture plate.
- Incubate 18-24 h in aerobic conditions at 35-37 °C.

\* Please refer to the IFU of CHROMagar™ StrepB for its preparation

### Typical colony appearance on CHROMagar™ StrepB



The pictures shown are not contractual.



## SPECIMEN COLLECTION AND HANDLING

LIM RambaQUICK™ StrepB can be used with the following specimens: rectal and vaginal specimens.

Use of transport devices approved for collection of such specimens is recommended.

## MATERIAL REQUIRED BUT NOT PROVIDED

Standard microbiological laboratory material for culture media preparation, control, streaking, incubation and waste disposal.

## PERFORMANCE

In the following study, 31 rectal and vaginal swabs were tested and read after 4 h, 6 h, 9 h and 24 h incubation at 37 °C in aerobic atmosphere and isolation on CHROMagar™ StrepB.

	LIM RambaQUICK™ StrepB	Reference Method (LIM Broth)
Sensitivity	75-100 % *	60-80 %
Specificity	100 % *	100 %

\* Data obtained from the study «Prepartum vaginal/anorectal Group B Streptococcus screening: Improvement of the enrichment step by the broth additive RambaQUICK StrepB» Didier-Marc Poisson et al. Journal of Microbiological Methods 2012.

## LIMITATIONS AND COMPLEMENTARY TESTS

• Performance of this test depends on the chosen Group B Streptococcus culture medium. We suggest to use the CHROMagar™ StrepB medium which allows an easy isolation and differentiation of group B Streptococci.

## WARNINGS AND PRECAUTIONS

- For Research Use Only (RUO). Not for use in diagnostic procedures.
- This laboratory product should be used only by trained personnel (healthcare professional, etc). Wear appropriate protective clothing, gloves and eye/face protection and handle appropriately with procedures and good laboratory practices.
- Use of the medium may be difficult for people who have problems recognising colours.
- For a good microbial detection, collection and transport of specimen should be well handled and adapted to the particular specimen according to good laboratory practices.
- Culture media should not be used as manufacturing material or components.
- Do not ingest or inhale the product.
- Do not use the product after the expiry date.
- Do not use the product if it show any evidence of contamination or any sign of deterioration.
- Do not use the product if the packaging is damaged.
- Any change or modification in the procedure may affect the results.
- Any change or modification of the required storage temperature may affect the performance of the product.
- Unappropriate storage may affect the shelf life of the product.
- Recap the bottles/vials tightly after each preparation and keep them in a low humidity environment, protected from moisture and light.
- Reading and interpretation should be performed using isolated colonies.
- Interpretation of the test results should be made taking into consideration colonial and microscopic morphology and if necessary, the results of any other tests performed.
- Laboratory, chemical or biohazardous wastes must be handled and discarded in accordance with all local and national regulations.
- For hazard and precaution recommendations related to some chemical components in this medium, please refer to the pictogram(s) mentioned on the labels. The Safety Data Sheet (SDS) is available on [www.chromagar.com](http://www.chromagar.com)

## DISPOSAL OF WASTE









After use, all plates and any other contaminated materials must be sterilized or disposed of by appropriate internal procedures and in accordance with local legislations. Plates can be destroyed by autoclaving at 121 °C for at least 20 minutes.

## LITERATURE REFERENCES

Please refer to our website page «Publications» for scientific publications about this particular product.

Web link: <http://www.chromagar.com/publication.php>

## IFU/LABEL INDEX

-  Catalogue reference
-  Consult instructions for use
-  Quantity of powder sufficient for X liters of media
-  Expiry date
-  Required storage temperature
-  Store away from humidity
-  Protect from light
-  Manufacturer

## REVISION HISTORY

This is version V4.0 of this document

Changing version is related to the new 3 pages format of the IFU.

NT-EXT-085 USA V4.0 / 21-Jan-2020

CHROMagar™ and Rambach™ are trademarks created by Dr A. Rambach  
ATCC® is a registered trademark of the American Type Culture Collection