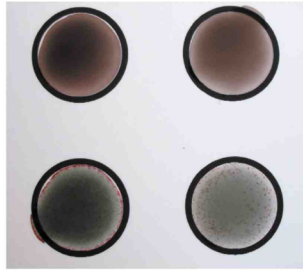


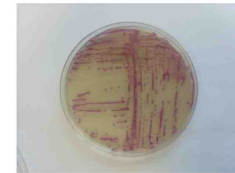
Charron J., Demondion E., Laudat P*
2009 RICAI Poster N° 5508

Figure 1: *Streptococcus agalactiae* Group B *Streptococcus* Figure 2: Results of a rapid agglutination test for Group B *Streptococcus*



CHROMagar

- CHROMagar StrepB: for detection of Group B *Streptococcus* (= *S. agalactiae*) by colony colour.
- *Streptococcus* B, A and *S. porcinus* (b) = mauve to pink
- other Gram + and other bacteria = blue, colourless or inhibited.



Purpose No. 1

Results No. 1 : Sensitivity, reading after one night incubation (<24h)

- Evaluate the technical sensitivity of CHROMagar StrepB media to detect *Streptococcus agalactiae* (Group B Strep).

- Genital samples to detect GBS (N=143) on pregnant women.
- Genital samples on non-pregnant women (N=178)

		CHROMagar StrepB			
N= 321		nég	Positive +	Positive ++	Positive +++
Blood agar plate	nég	Sc ≈ 97,4%			
	nég	277	4**	1**	
	Positive +	1*	10		
	Positive ++			13	
	Positive +++				15

Purpose No. 2

Results No. 2 : Specificity, reading after one night incubation (<24h)

- Evaluate the technical specificity of CHROMagar StrepB media.
- On a 66 collection strains of *Streptococcus* and *Enterococcus* spp.

Strains N = 66	Number	Pink to mauve colonies	Size of colony (mms)
<i>S. pyogenes</i> (A)	19	19/19	1 à 1,5
<i>S. agalactiae</i> (B)	22	22/22	1 à 1,5
<i>S. porcinus</i> (b)	2	2/2	1 à 1,5
<i>Enterococcus</i> spp.(D)	10	0/10	1 à 1,5
Streptocoque G	7	3/7	<1 à 1
Autres	6	0	<1

Figures

Figure 3 : Culture of Group B *Streptococcus* on CHROMagar StrepB medium

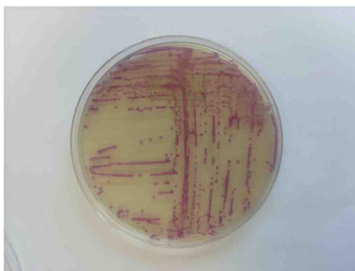


Figure 4: Culture of Group D *Streptococcus* on CHROMagar StrepB medium



Figure 5 : Comparison of culture: - left side : *Streptococcus agalactiae* (B) - right side : *Streptococcus pyogenes* (A)



Figure 6 : Culture of *Streptococcus porcinus* (b) on CHROMagar StrepB medium



Conclusion

We can conclude from this study that :

The CHROMagar StrepB medium is particularly rapid (<24h) for detecting *Streptococcus* involved in materno-faetal infections community associated or health-care associated (eventually nosocomial infections):

- *S. agalactiae* (B)
- *S. pyogenes* (A)
- *S. porcinus* (b)

For more information on CHROMagar StrepB :

CHROMagar Company:

Email: chromagar@chromagar.com

Other Data

References

- The reading is not influenced by incubation with or without CO₂.
- The suspect colonies have to be confirmed by serogrouping or identification (gallery or mass spectroscopy)
- Rapid Detection after overnight incubation, <24 hours.

- 1 - A.N.A.E.S. Prévention anténatale du risque infectieux bactérien néonatal précoce. Recommandations pour la pratique clinique. Septembre 2001.
- 2 - REMIC. Référentiel en microbiologie médicale de la Société Française de Microbiologie (SFM). 3^{ème} édition 2007.
- 3 - S.F.H.H. Guide pour la surveillance et la prévention des infections nosocomiales en maternité. Version 3.1/2008.
- 4 - Martin C., Fermeaux V., Eyraud J-L., Aubard Y.; *Streptococcus porcinus* as a cause of spontaneous preterm human stillbirth. J.Clin.Micobiol., 2004, 42(9), 4396-98